

THE PHILLIPS FARM

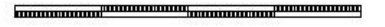
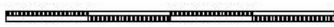
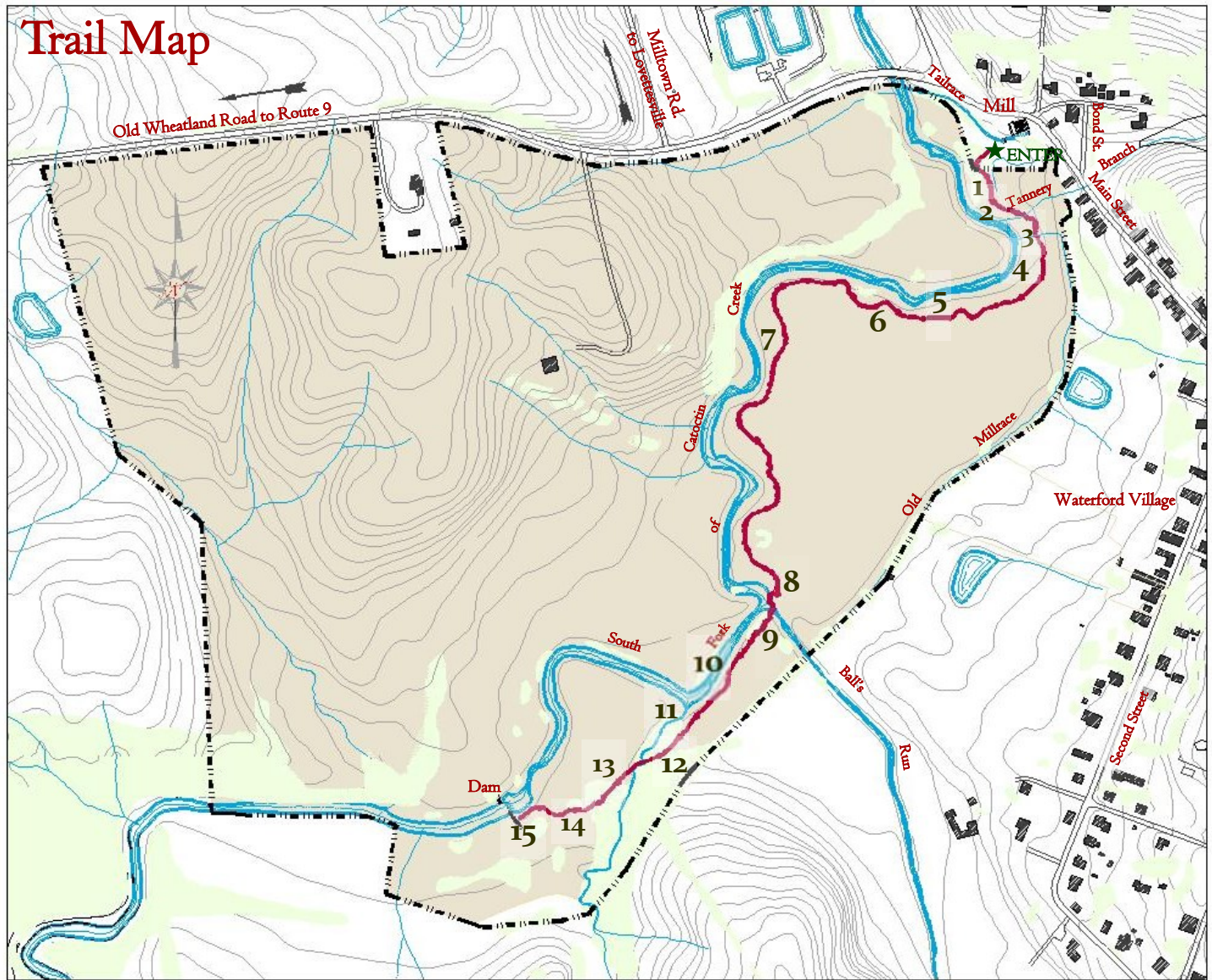
A Self-Guided Tour








The present-day Phillips Farm is a portion of a 220-acre parcel assembled by Thomas Phillips between 1798 and 1832. Thomas Phillips was born in Philadelphia in 1776, a few weeks after the signing of the Declaration of Independence. He made his way to Waterford and became a partner in a prosperous tannery operation with local Quaker Asa Moore. He married Moore's niece, joined the Religious Society of Friends, and became a pillar of the community. After Moore died, Phillips acquired the mill and acreage on both sides of Catoctin Creek. He sold the mill in 1832 to focus exclusively on farming. He employed white and black workers, but never slaves since Quakers prohibited that practice. Phillips' descendants continued to farm the property for 150 years. The Farm has produced beef, pork, hay, corn, honey, dairy products, wool, and wheat. A local farmer now leases it to cut hay for his cattle.

The Waterford Foundation acquired 144 acres of the original Phillips Farm acreage on December 18, 2003, to protect it from residential development. It conveyed a conservation easement to the Virginia Outdoors Foundation (VOF) in order to “protect the Farm’s agricultural soils, viability, and productive capacity, and its water quality... and to preserve the integrity of the Waterford Historic District by protecting the traditional and scenic rural character of the Farm.”

“The Phillips Farm circa 1900,” by Mary F. Dutton Steer



-  Wooded Areas
-  Buildings
-  Trail
-  Phillips Farm Boundary
- 1-15** Keyed Markers
-  Stream Beds & Ponds

The numbers on the map and on the descriptions below correspond to the numbered posts along the trail. This walk is about 1.5 miles round trip.

1. The power potential of the **South Fork of Catoctin Creek** helped draw skilled Pennsylvania Quakers in the mid 1700s to settle what is now Waterford. For 200 years the stream powered grain, saw, and woolen mills, including the three-story brick mill still standing. But the creek was also an obstacle to transportation—and dangerous to ford during high water. The current bridge is just the latest of many. A covered wooden bridge spanned the creek from the 1830s until it was swept away in the 1889 storm that caused the Johnstown Flood disaster in Pennsylvania.

2. As you look upstream, **Tannery Branch** flows from springs a few hundred yards to the left, beyond Bond Street. From the late 18th to late 19th centuries it supplied water to a tannery at Main and Liggett Streets that processed hides into leather for cobblers, saddlers, and harness makers. Visible in the eroded banks here are gray **seams of clay**. Such deposits were dug, shaped and baked into the bricks that built much of Waterford. In the mid 20th century, **clay drain pipe** was installed under much of the nearby flood-plain to make it suitable for farming. Water still pours from pipes visible along the eroded creek bank. The modern plastic pipe you see drains water from cellars along lower Main Street.

3. In the summer, common milkweed is in bloom here. Female **monarch butterflies** will lay their eggs only on milkweed, the sole host plant for monarch caterpillars. In the fall, the adult monarchs migrate 1,900 miles from here to central Mexico, a feat of stamina and navigation unmatched in the insect world. The plentiful milkweed on the Phillips Farm has earned it formal recognition as a “Monarch Way Station” by the Monarch Watch organization.

4. Phillips Farm offers a wide variety of **habitats** for wildlife — floodplain, stream, riparian buffer, deciduous woodland, hedgerows, and meadows. Here on the floodplain, you find such water-loving plant species as the graceful river birches, willows, and the majestic sycamores. You can find over 30 species of birds, including belted kingfishers, red-winged blackbirds and great blue herons.

5. **Riparian buffers** are vegetated areas along waterways that help protect the water from pollution, stabilize stream banks, and provide streamside habitat for wildlife. Water-loving shrubs (such as gray and silky dogwood, buttonbush and elderberry) have recently been planted here by the Loudoun Wildlife Conservancy to restore the riparian buffer.

6. During the **Civil War**, Phillips Farm suffered. Quaker Thomas Phillips was a pacifist, but troops from both sides helped themselves to his horses and crops. A sister lamented, “. . . it is really too bad for him to be treated so.” In October 1862, after the Battle of Antietam, a Federal infantry division paused at Waterford for several days on its way south. Soldiers camped here and on nearby farms. In July 1863, after Gettysburg, thousands of Union troops poured into Waterford; many set up camps along Catoctin Creek. Quakers offered “grass for thy horses, a fine spring for thy men and beasts, and ricks of cordwood for thy cooking.” But the following year Federal troops burned the Phillips barn.

7. The **eroding stream banks** here offer nesting habitat for northern rough-winged swallows. Please be aware that the banks are very unstable. This accelerated erosion, as well as area land use practices, impact the quality of Catoctin Creek. Volunteers assess the quality of the creek and the surrounding environment three times a year and provide the data to appropriate state agencies. Bottom-dwelling aquatic insects such as mayfly, caddisfly and stonefly larvae are biological indicators of good water quality.

8. Eastern bluebirds dwell on the Phillips Farm year round. Their numbers have declined nationwide due to habitat loss and competition from invasive bird species. If you follow the tree line along the millrace, from the mill to this point, you can see a “**bluebird trail**” of seven nesting boxes. The stovepipe below each box blocks climbing predators. Volunteers monitor the boxes from March through August.

Ten baby bluebirds fledged from these boxes in 2008, the trail's first year. With the help of man-made trails such as these, bluebird populations are recovering.

9. **Ball's Run**, which here joins Catoctin Creek, once powered two Waterford mills a few hundred yards upstream. But it presented a problem for owners of the mill at the foot of Main Street, who had dug a channel or millrace to carry water from a dam farther upstream on Catoctin Creek and needed to get that water past the Run, which flowed at a lower level. In the early years they probably built a wooden trough or aqueduct to carry the water over Ball's Run. By the early 1900s, though, they had dammed the Run to bring it up to the level of the millrace. Then, by way of sluice gates, they could divert its water into the race to augment the flow to the mill in dry seasons. The overflow was known as “The Chute,” and below the dam was a favorite swimming hole until time and repeated floods took their toll. Today only a stone buttress or two and scattered chunks of concrete mark the site of the dam. A short path to the left takes you to the spot.

10. For 150 years this property flourished as a diversified **family farm**. In 1850 it produced wheat, corn, oats, beef, milk, butter, wool, hay, horses, pork, poultry, eggs, fruit and honey, as well as potatoes and other garden crops. The small white barn you see on the hillside shelters the machinery used today for haying the surrounding fields.

11. **Invasive plants** such as multiflora rose, tree of heaven, autumn olive, Japanese barberry, and Canada thistle have been encroaching into the Phillips Farm environment for some time and are overtaking habitat of native flora. The tallest tree in front of you is a tree of heaven. The Management Plan for the Phillips Farm includes efforts to control the growth of invasive species, particularly in this area.

12. Here a small wet-weather stream intersects the old hand-dug **millrace**, visible from the path at the left. Hikers can follow the dry bed of the race back to Ball's Run at the site of “The Chute.” This channel, some two-thirds of a mile long, in all, was dug by hand, probably around 1760. Etched in the cement cap of the low stone containment wall here, is the date October 28, 1928, the initials of the last miller, William S. Smoot, and those of his 17-year-old helper, John E. Divine, who later helped preserve much of Waterford's history.

13. The large tree here is a **green ash**, an aging survivor of the 19th century. It and other ashes on the farm face an uncertain future with the recent arrival in the Washington area of the emerald ash borer, a destructive beetle native to Asia.

14. The glorious **white oak** in front of you may have witnessed the Quakers' arrival here in 1733, as well as construction of the dam. Its long, low branches indicate that it did not grow in a forest. Local villagers have nicknamed it "Old John" in memory of John Hough (1720-1797), a Waterford Quaker who owned thousands of acres and a number of mills in Loudoun. White oaks were favored by early settlers for building, baskets, barrels, flooring, furniture, and many other uses. Native Americans made flour from the acorns.

15. The **mill dam**, like the race, dates from about 1760. Consider how laborers managed to collect, move, and place such large boulders with no more than human and animal muscle. The dam once stood a few feet higher—enough to raise the level of the impoundment more than 12 feet above the outflow from the wheel at the mill. In 1908 at the near end of the dam, miller William M. Fling signed his name in wet concrete he used to cap and reinforce the dam.

A bit beyond the dam, in 1814, African American Benjamin Kins and wife Letitia bought two acres spanning the creek and built a house. They were among the first black families in the area to own their own land. Benjamin had been born a slave in Calvert County, Maryland, about 1770, but owner John Talbott freed him when the Quakers abolished the use of slaves in 1776. Talbott Farm remains today just southeast of the village.



As you enjoy the history and geography of this trail, you also may observe many bird species that make the farm their home:

Bluebird • Tree, Northern rough-winged, and Barn swallows
Great blue heron • Green-backed Heron
Belted kingfisher • Carolina wren
Cedar waxwing • Eastern phoebe • Common yellowthroat
Red-winged blackbird • Baltimore and Orchard orioles
Red-bellied and Downy woodpeckers
Ruby-crowned kinglet • Blue-gray gnatcatcher
Red-tailed and Red-shouldered hawks • Barred owl
Osprey • Black and Turkey vultures



The printing of this brochure was funded through the
Piedmont Community Foundation
by a generous grant from the
Peter M. Howard Memorial Fund.

🌿 Access Policy for the Phillips Farm 🌿

Welcome!

Since 1943, the community of Waterford has worked hard to preserve the open spaces within and around the Village. We invite you to visit and enjoy these spaces, and to treat them with care so that future generations may enjoy them, too.

The Virginia Outdoors Foundation (VOF) holds a conservation easement on the Phillips Farm, ensuring that it will be preserved much as you see it today in perpetuity. Its significance to the Waterford National Historic Landmark District is such that any change to its use or appearance could threaten this national heritage designation.

Therefore, we ask that you join with us, VOF, and our other partners to ensure that this farm will still be here for future generations to learn from and enjoy. We ask you to walk only on the mowed trail and observe the following *Rules of the Trail* designed to enhance your enjoyment of the property and to protect your health and safety. They also serve to protect the environmental quality, agricultural value and open space integrity of the farm.

We extend a warm invitation to become directly involved in the Phillips Farm's ongoing activities. Please email the Foundation, info@waterfordfoundation.org, for more information.

🌿 Rules of the Trail 🌿

Please help us protect the farm's resources.

- For your safety, please stay on the posted trail.
- Please keep pets on a leash and remove their waste.
- So that others may enjoy this special place in the future, help us protect all animals, plants and cultural resources. Please do not collect or distribute plant or animal life or feed the wildlife.
- For public health and safety reasons, there is no hunting, trapping, swimming, horseback riding, biking, use of motorized recreational vehicles, camping, smoking, firearms, fires, fireworks, or illegal use of drugs or alcohol.
- Please carry out what you carry in.

Printed on 100% recycled paper.



Waterford Foundation, Inc.
40183 Main Street
Post Office Box 142
Waterford, VA 20197-0142
Phone 540.882.3018

Our Mission

The mission of the Waterford Foundation is to preserve the historic buildings and the open spaces of the National Historic Landmark District of Waterford, Virginia; and through education, to increase the public's knowledge of life and work in an early American rural community.

Join the Waterford Foundation

When you become a member of the Waterford Foundation, you will be joining other citizens who are concerned about the preservation of this very special place. You will also assist us in our goal of providing educational opportunities so that the knowledge of life and work in a early rural community is not forgotten.

There are many benefits to membership with the Foundation: free tickets to the annual Fair, discounts on our publications, seasonal newsletters, and invitations to our various and always interesting programs and activities.

Call 1.540.882.3018 to sign up or visit us on the web at
www.waterfordfoundation.org

Name _____
Address _____

City _____
State _____ Zip _____
Email _____
Phone _____

\$50 Single Membership \$100 Family Membership

Check enclosed
(Please make check payable to Waterford Foundation, Inc.)

OR

MasterCard or Visa Card Number _____

Signature _____ Exp. Date ____/____

The Waterford Foundation, Inc., is registered with the Virginia Division of Consumer Protection. A financial statement is available upon written request from the Office of Consumer Affairs. The Foundation's EIN is 54-0755457.