

Statement of Justification

Gateway Signs for the Village of Waterford Waterford, Virginia

I. History of Traffic in Waterford

The Village of Waterford exists as a rare and culturally significant example of 18th and 19th century American rural life in Northern Virginia. Largely preserved, the entwined historic architecture and narrow village roadways make Waterford a "very special place."

The roads in Waterford were designed for non-motorized vehicles, and have been paved to accommodate modern transportation. They have not, however, been modernized to accommodate higher speeds and multiple lanes. To do so would require moving historic properties. In addition, the essence of a village is the interaction between residents. This means there remains a high volume of pedestrian traffic, as there was in the 18th and 19th century.

Similarly, Waterford remains an access for neighboring towns and villages, but unlike modern housing developments, that may prohibit unwanted through traffic through the use of cul-de-sacs, Waterford is unable to do so. Yet, in the end, we are supposed to remain a viable example of the way things used to be: a place of commerce, tolerance and camaraderie.

Increased regional development, and inadequate transportation planning, burdens the Village by placing greater traffic volumes and increased motorists speeds in closer proximity to residents, property, and historic infrastructure.

The Waterford Citizen's Association (WCA) has developed a plan to address the increased traffic burden in the Village. A small part of that plan involves gateway signs at the three primary traffic entrances.

In an effort to develop the best possible sign to represent Waterford, the WCA and the Waterford Foundation co-sponsored a design competition for the gateway signs. The competition was a juried by local residents. The jury consisted of: Nancy Doane, Mary Dudley, Tom Edmonds, Brown Morton, and Antonia Walker.

The enclosed design is the result of the jury's selection and subsequent constructive critique.

II. Reasons for Proposed Signs

Gateway signs are consistently used as a planning measure to announce one's arrival into a populated area. Deploying gateway signs provide a visual cue that assist in slowing traffic entering the Village. In addition, the Waterford Community wanted a sign that expressed the Village's unique historic and rural character thus enhancing the County's proposed way-finding sign system.

III. Appropriateness of Proposed Alterations

Prior to becoming an historic landmark, Waterford's greatest period of economic prosperity was the period after the American Revolution, but before the Civil War (1783-1861). During that 78 year period the Village experienced its greatest infrastructure growth. The proposed sign draws upon traditional elements of sign design derived directly from that period.

Specifically:

- The arch top is a classic form often used for sign boards. It can also be found on headstones in the Village's cemeteries.
- The edge banding is taken directly from casework of the Georgian period.
- The Caslon lettering used for "Waterford" and the "1733" was the most common letter type during this period. It was the letter type of the *Genius of Liberty* a Leesburg newspaper of the Federal period.
- The acorn finial motif is representative of the chair manufacturing that took place in the Village.
- The colors are drawn from historic colors of the period, and may still be seen on the homes today.
- The sign's standard has a chamfered corner and lamb's tongue termination found on many original structural post elements still seen today in the Village.

We firmly believe that the design and placement of the gateway signage is not only appropriate, but is respectful of the historic integrity of the Village.

Respectfully Submitted,

Thomas Edmonds, President, WCA

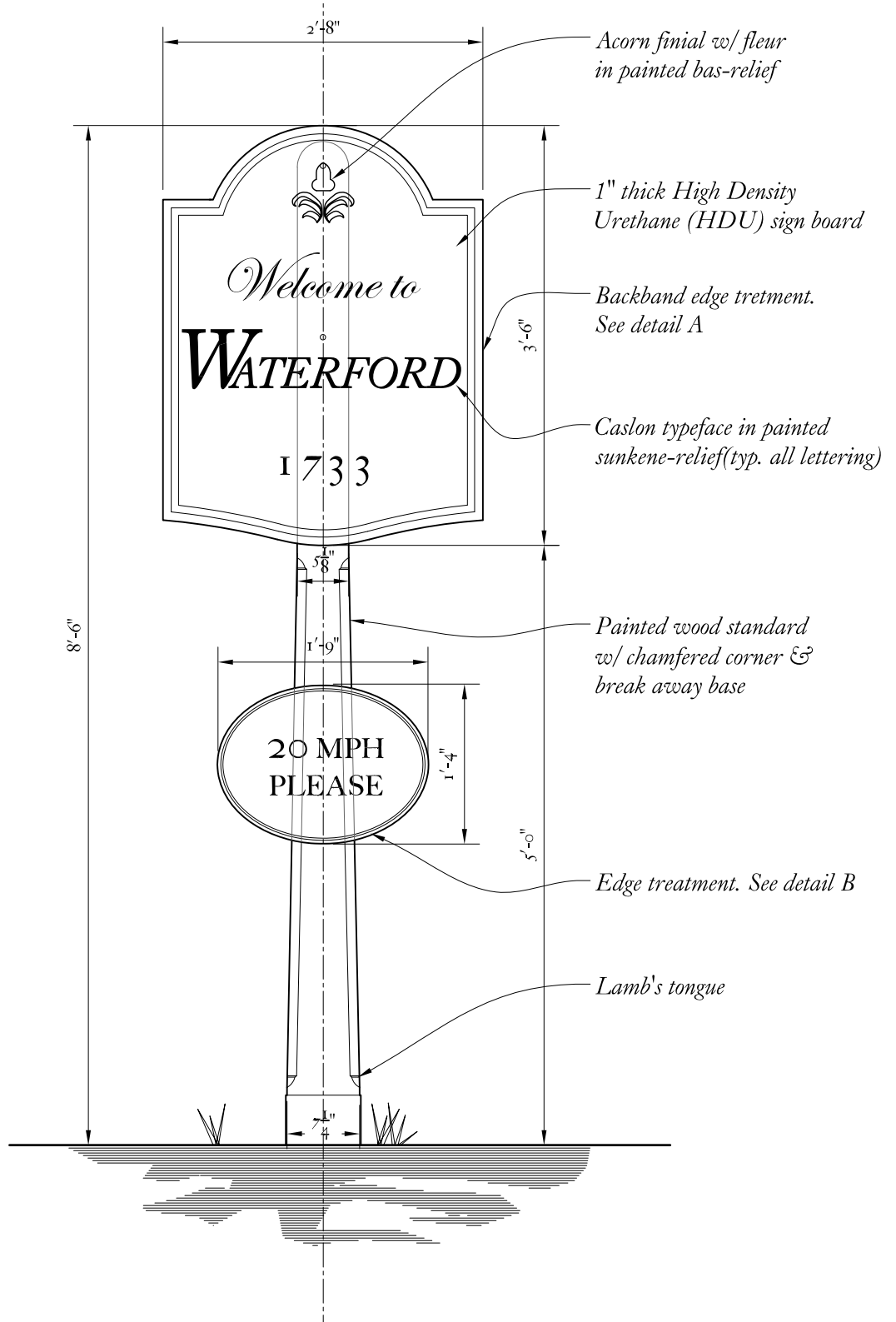
Mark Denicore, Chairman Traffic Calming Committee

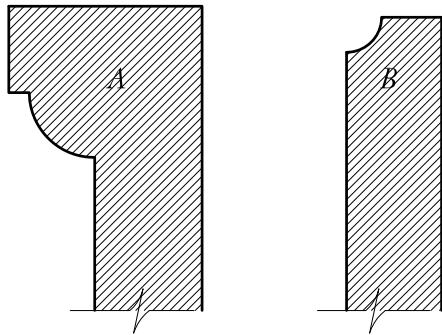
Robert Hale, Assistant Chairman Traffic Calming Committee

Gateway Signs for the Village of Waterford

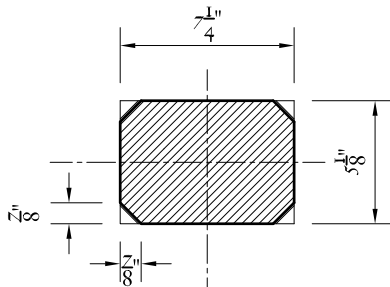


Rendering Sign Elevation



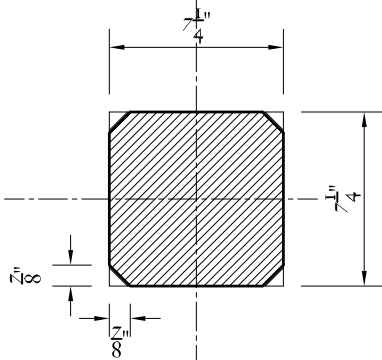


Sign Edge Treatments
Scale: 1/2 Full



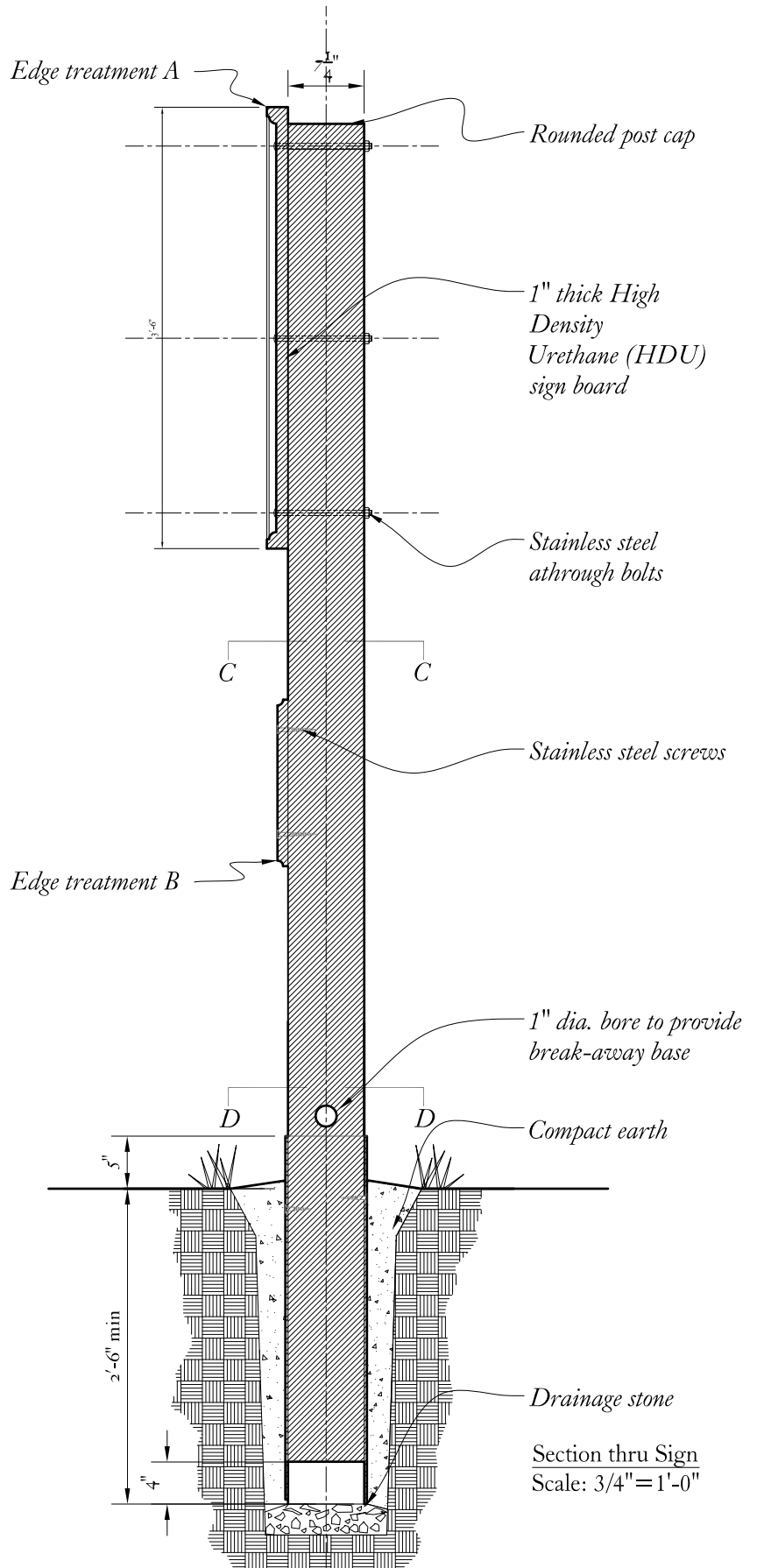
C-C

Section Cut at Post at Lamb's Tongue Top
Scale: 1 1/2" = 1'-0"



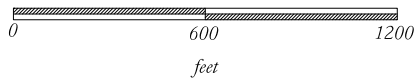
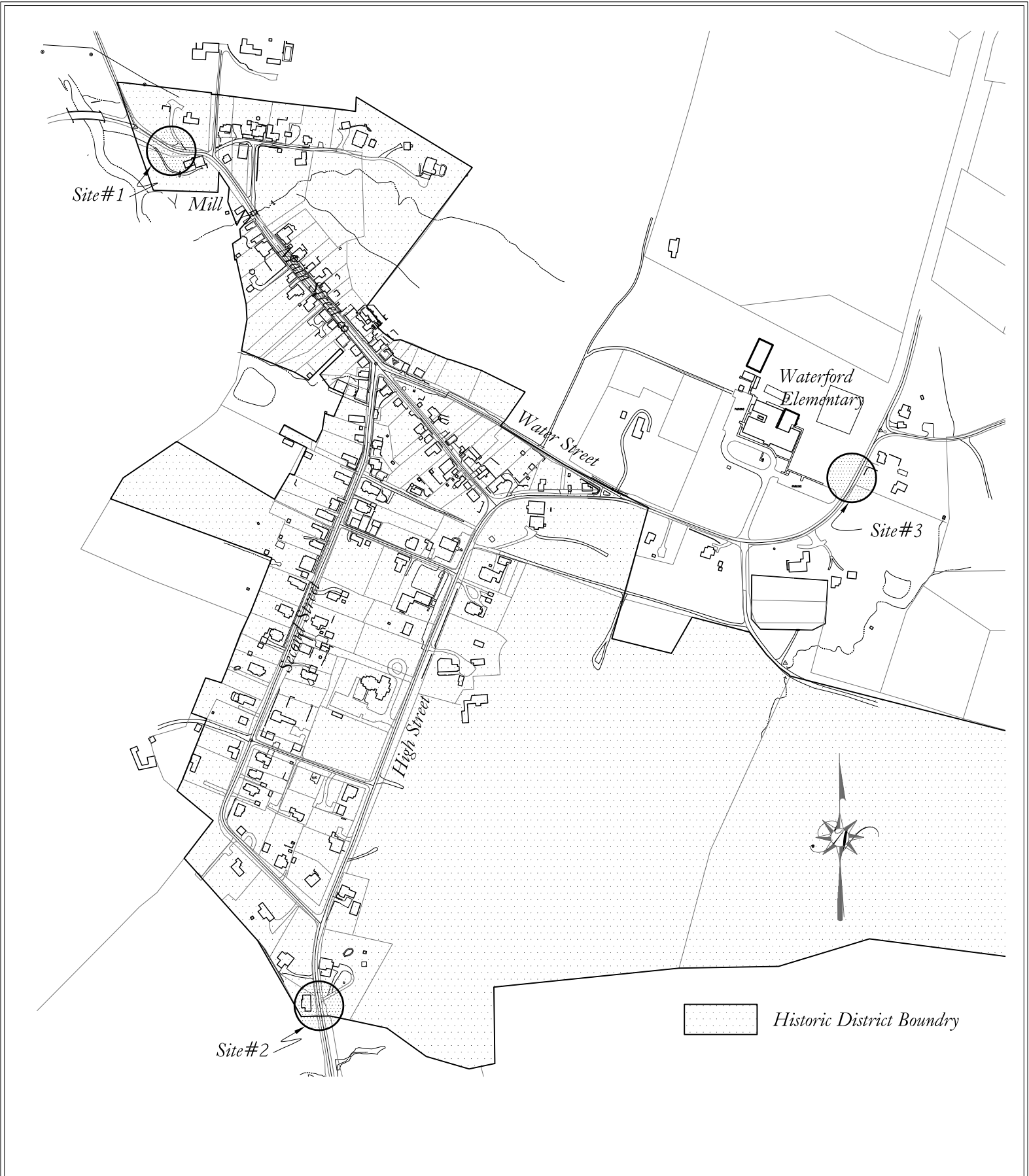
D-D

Section Cut at Post at Lamb's Tongue Base
Scale: 1 1/2" = 1'-0"

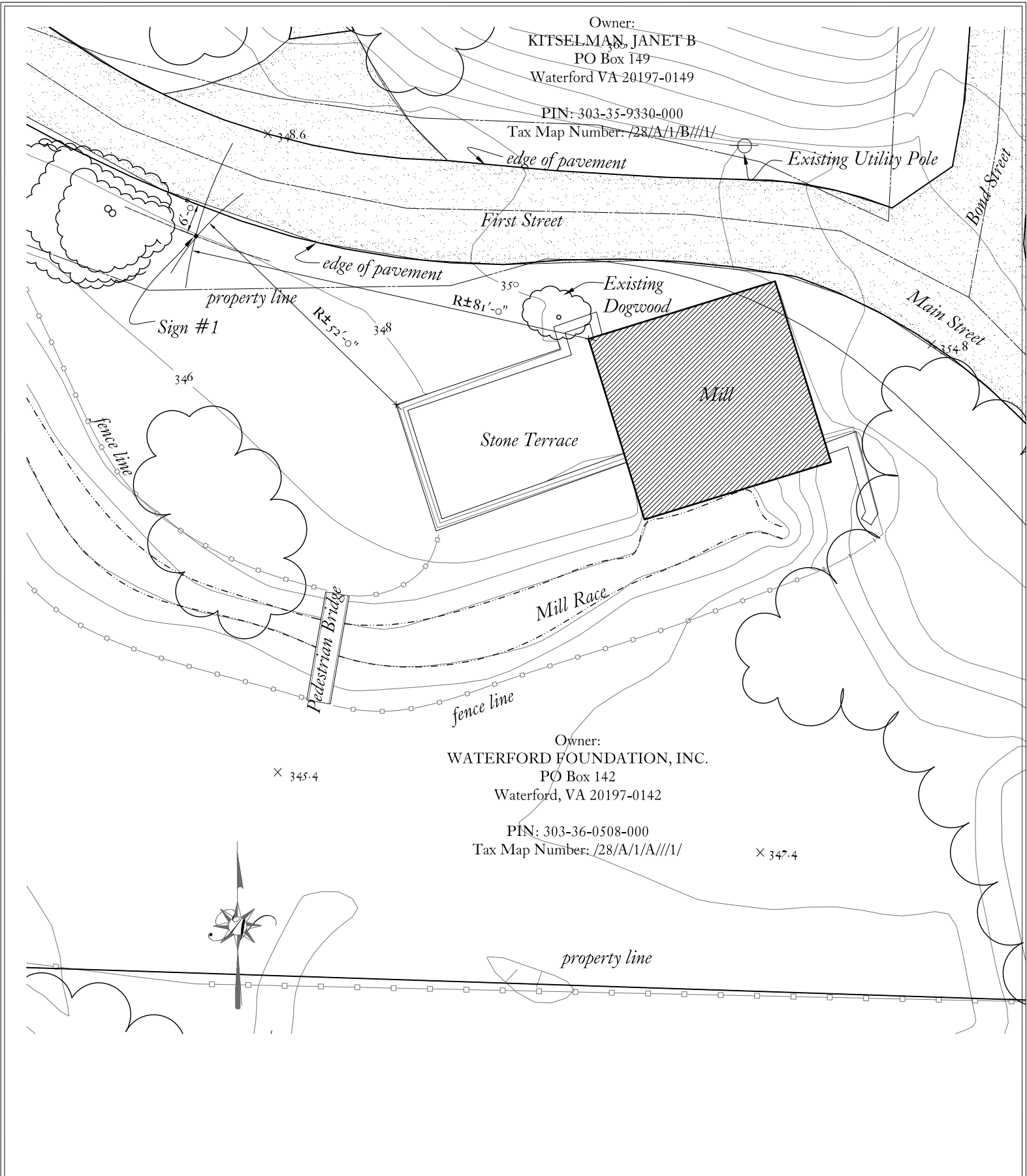


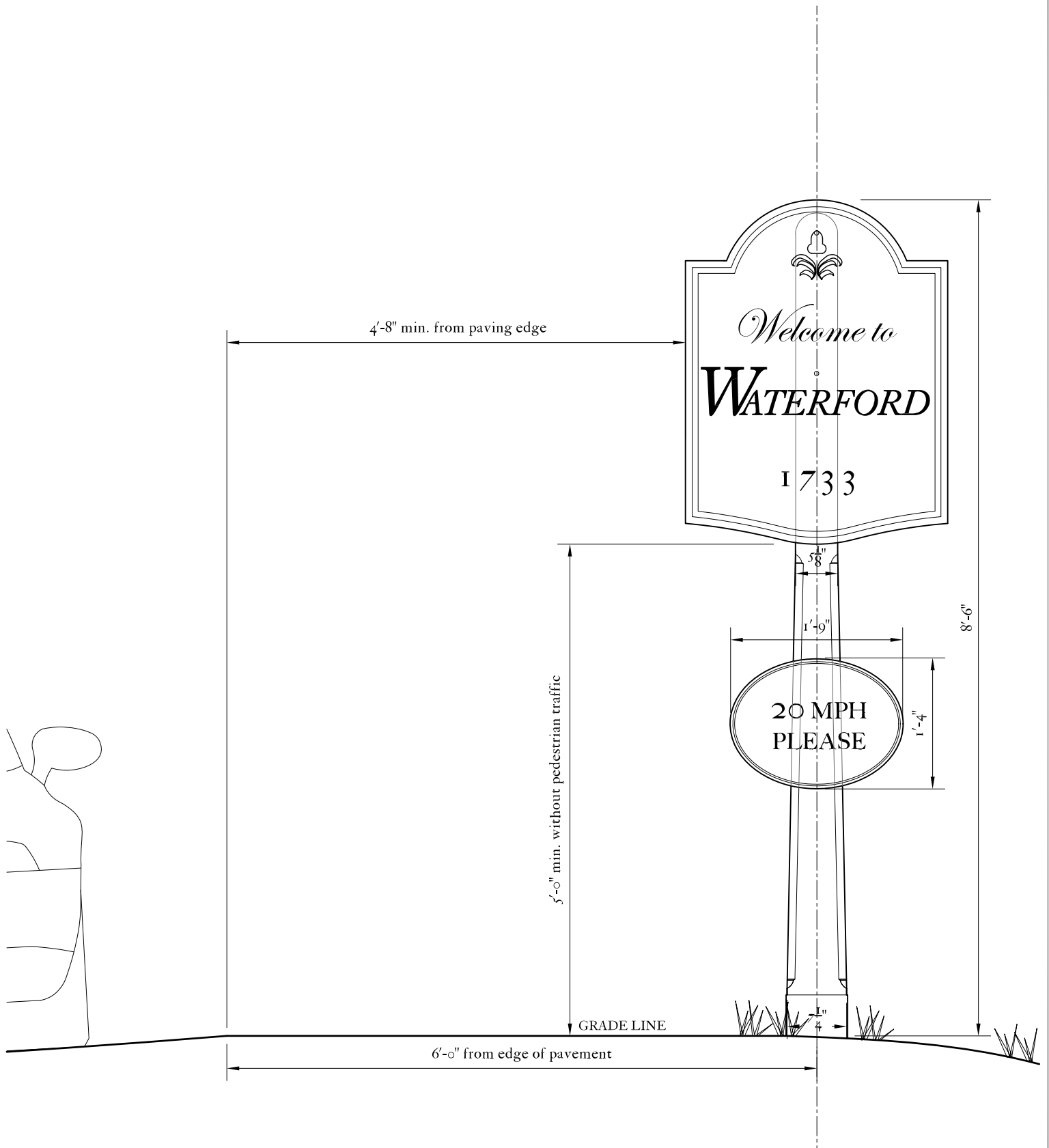
Section thru Sign
Scale: 3/4" = 1'-0"

Gateway Signs for the Village of Waterford



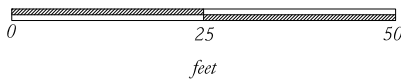
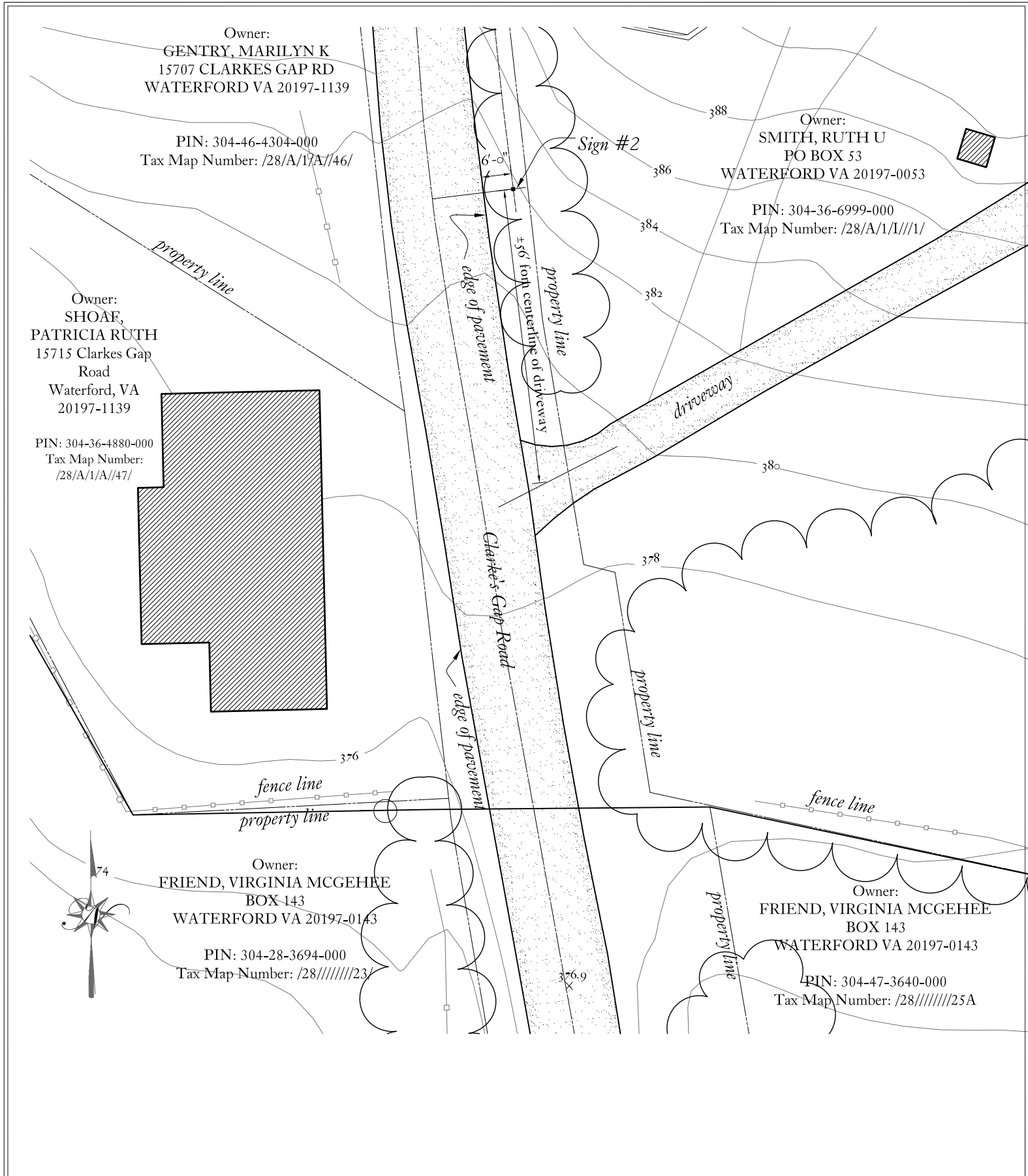
Gateway Signs for the Village of Waterford







Gateway Signs for the Village of Waterford





Gateway Signs for the Village of Waterford

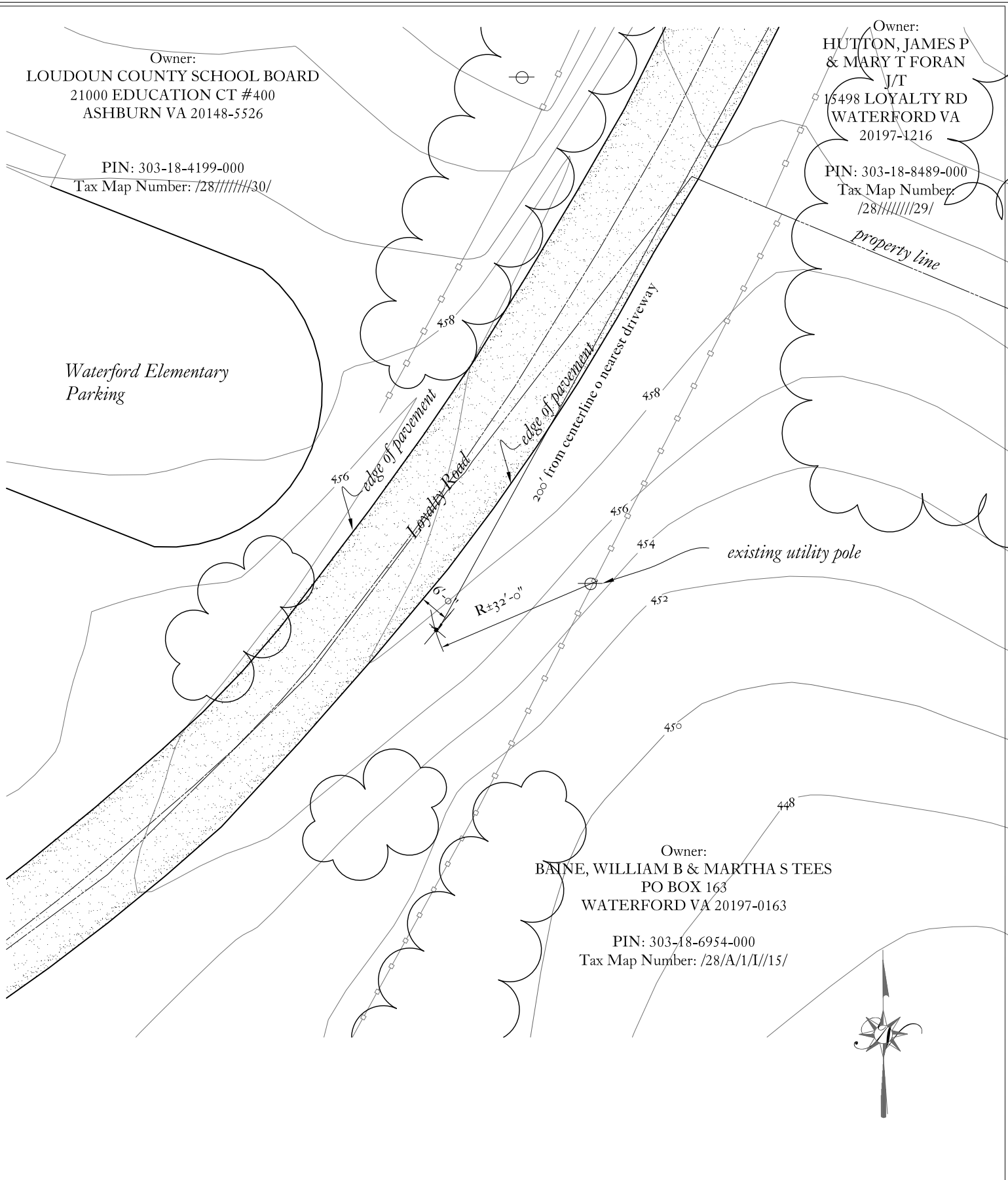
Owner:
 LOUDOUN COUNTY SCHOOL BOARD
 21000 EDUCATION CT #400
 ASHBURN VA 20148-5526

PIN: 303-18-4199-000
 Tax Map Number: /28/////30/

Owner:
 HUTTON, JAMES P
 & MARY T FORAN
 J/T
 15498 LOYALTY RD
 WATERFORD VA
 20197-1216

PIN: 303-18-8489-000
 Tax Map Number:
 /28/////29/

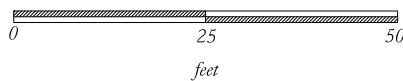
Waterford Elementary
 Parking

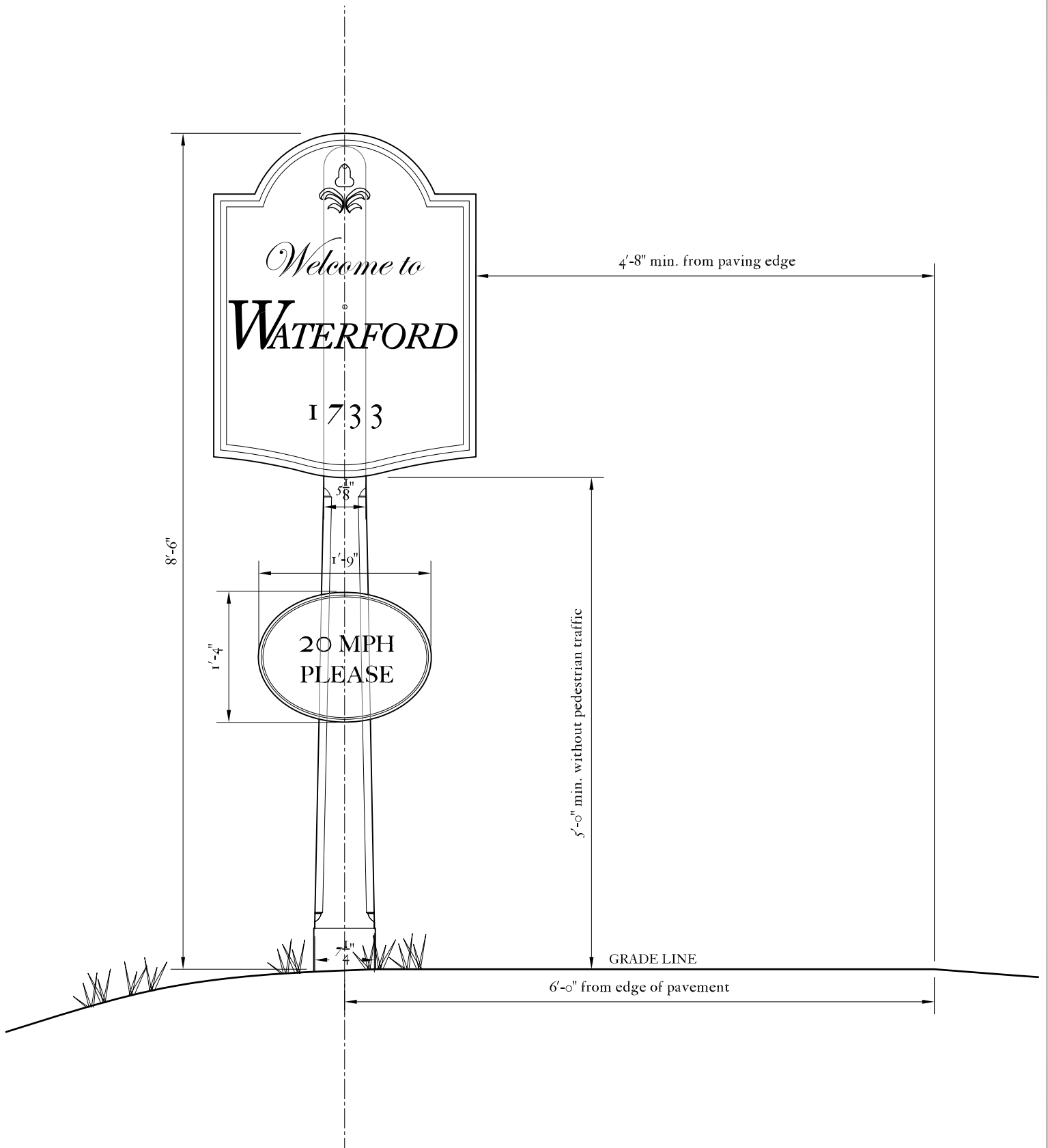


Owner:
 BAINE, WILLIAM B & MARTHA S TEES
 PO BOX 163
 WATERFORD VA 20197-0163

PIN: 303-18-6954-000
 Tax Map Number: /28/A/1/I/15/

Site III
 Proposed Sign Location Plan







*View looking southwest toward
Old Meeting House*